



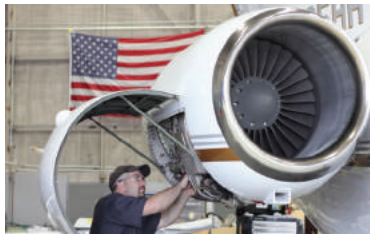
C&L Aerospace

# **HAWKER SUPPORT PROGRAM**

+1 207 217 6050 | [bizjets@cla.aero](mailto:bizjets@cla.aero) | [www.cla.aero/hawker](http://www.cla.aero/hawker)

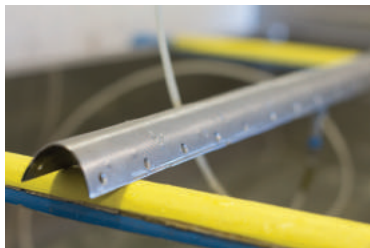
YOUR ONE-STOP SOLUTION FOR HAWKER SUPPORT AND SERVICE

# HAWKER SUPPORT PROGRAM



Over the years, C&L Aviation Group has provided extensive support of several corporate aircraft types, including our flagship corporate airframe - the **Hawker 800**.

To further support your operations, C&L has established extensive capabilities, inventory solutions, and lines of distribution to keep your Hawker in the air where it belongs.



## Hawker Component Repair Specialties

- Leading Edge Sections
- TKS Panels
- Titanium Outboard Leading Edges
- Handrails / Doorstay Assemblies
- Airbrakes
- Gear Doors
- Flight Controls
- Rotable Exchange Part
- Consumables
- Distributorships
- Contract Pricing



C&L Aerospace

+1 207 217 6050  
bizjets@cla.aero

YOUR ONE-STOP SOLUTION FOR HAWKER SUPPORT AND SERVICE

# HAWKER COMPONENT REPAIR SPECIALITIES

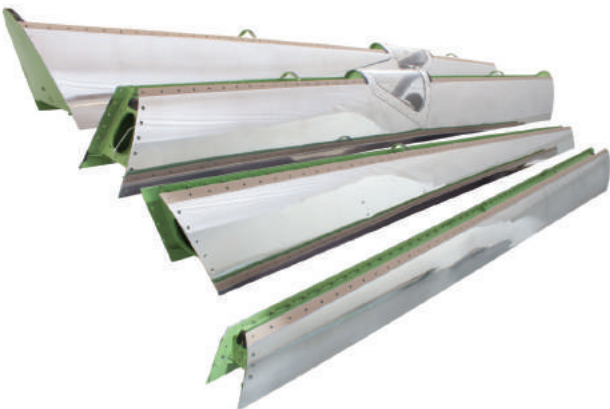


## Leading Edge Sections

C&L has developed capabilities to complete repairs and full overhauls of Hawker leading edge sections. We are able to provide solutions for any leading edge requirement.

Common issues include:

- Corrosion in the "rebate areas". (This is where the TKS panels install along the leading edge section.)
- "Hangar Rash", dents, scuffs, gouges.
- Skin separation
- Broken ribs



## How can we help?

- Repair evaluation
- We can complete a full inspection of your sections to find the most appropriate solution for your needs
- If unit does not require full overhaul, C&L will offer repair solution as a cheaper alternative to overhaul or exchange
- We will pursue single skin replacement vs. dual skin replacement
- Replacement skins (upper & lower) stocked at all times
- Exchange HSTAB and wing sections available
- Units can be drilled/trimmed to custom fit your aircraft
- Quick turn times
- 1 year warranty



**C&L Aerospace**

+1 207 217 6050  
bizjets@cla.aero



# HAWKER COMPONENT REPAIR SPECIALITIES



## TKS Panels

Stop weeping over faulty TKS panels. C&L has you covered.

With the largest inventory of ready-to-install TKS panels in the world, C&L is the premier support vendor and is well-equipped to provide the proper support for your needs.

C&L offers a variety of UNMATCHED support options, each catered specifically to your requirement.

Common issues include:

- Disbonding/separation
- Low flow/clogging
- Leaking
- Denting
- Hail damage, bird strikes, drops
- Elongated mount holes
- Broken fixtures
- Membrane ruptures

## How can we help?

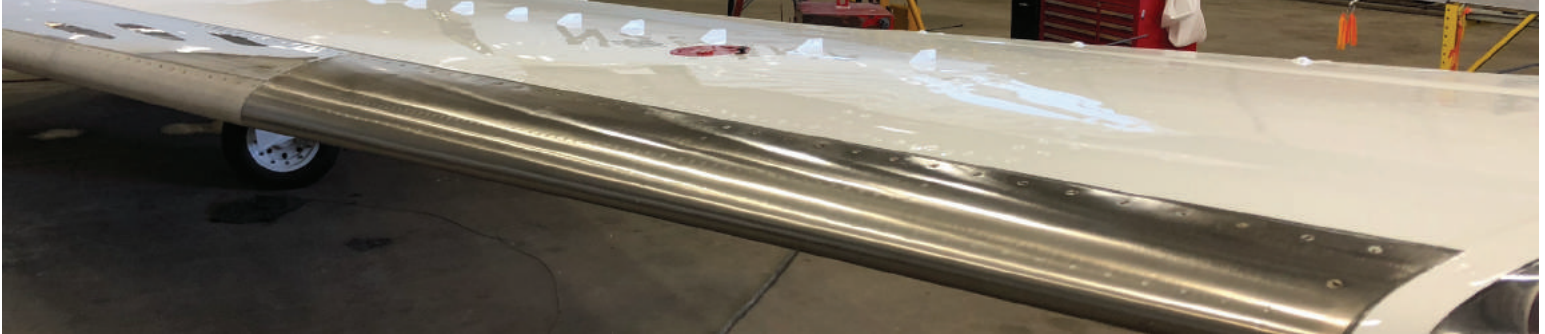
- TRUE FLAT RATE repairs and overhauls
- TRUE FLAT RATE Exchanges
- No billbacks - EVER
- Cost-effective evaluations that save you money
- If repairable, cost is 40% of the normal exchange
- Quick turn times
- Several hundred units in stock
- 1 year warranty on all repairs/repaired exchanges
- 2 year warranty on all overhauls/overhauled exchanges



**C&L Aerospace**

+1 207 217 6050  
bizjets@cla.aero

# HAWKER COMPONENT REPAIR SPECIALITIES



## Titanium Outboard Leading Edges

This style wingtip leading edge replaced the outboard leading edge section (on earlier Hawkers). This leaves each Hawker wing with an inboard and center leading edge section (in which TKS panels install along) and this bad boy - a laser-drilled titanium section. Essentially, this is your leading edge and TKS panel rolled into one solid-state product... in which we fully support.

Common issues include:

- Disbonding/separation
- Low flow/clogging
- Leaking
- Denting
- Hail damage, bird strikes, drops
- Elongated mount holes
- Broken fixtures
- Membrane ruptures

## How can we help?

- TRUE FLAT RATE repairs and overhauls
- TRUE FLAT RATE exchanges
- No billbacks - EVER
- MASSIVE savings, if repairs are possible
- Full OEM support
- 1 year warranty on all repairs/repairs exchanges
- 2 year warranty on overhauls/over-hauled exchanges
- Large pool of exchange units available from stock
- Quick turn times



**C&L Aerospace**

+1 207 217 6050  
bizjets@cla.aero

# HAWKER COMPONENT REPAIR SPECIALITIES



## Handrails / Doorstay Assemblies

Our component repair and interior refurbishment teams put their heads together to establish beautiful repairs and overhaul solutions for upper and lower doorstay assemblies.

Common issues include:

- Sheared aluminum tubes
- Loose fittings
- Excessive play in latches
- Seized roller assemblies
- Frayed/worn leather wraps
- Chafing



### How can we help?

- Full repair and overhaul capabilities for lower assembly as well as both styles of upper assemblies
- Fixed handle
- Folding handle
- Replacement of tubes with stronger material
- Results in a sturdier product, less likely to shear again
- Custom leather wraps to match existing interior
- Quick turn times
- Exchange units available in stock
- 1 year warranty



C&L Aerospace

+1 207 217 6050  
bizjets@cla.aero

YOUR ONE-STOP SOLUTION FOR HAWKER SUPPORT AND SERVICE



# HAWKER COMPONENT REPAIR SPECIALITIES

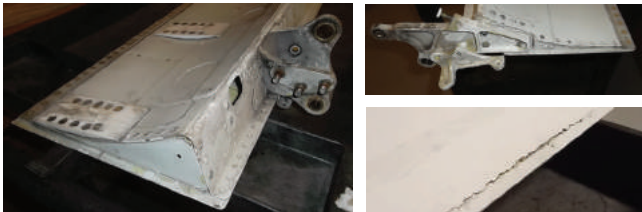


## Airbrakes

Given the nature of their function, airbrakes are a commonly-damaged flight surface. Braking via air resistance can be a stressful job. That's why we're here to help.

Common issues include:

- Damaged skin
- Corrosion, dents, cracks
- Internal corrosion
- Damaged brackets/attach points
- Broken/cracked ribs



## How can we help?

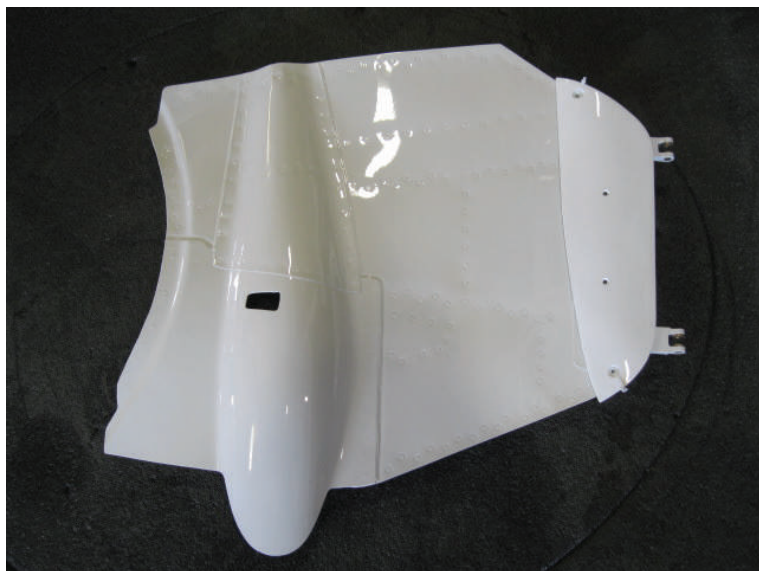
- Removal of old-style foam  
(Corrosion nightmare as this type of material retains moisture)
- Nylon riblet modification
- Repair or replacement of lower pan
- Exchange units available to support quick turn times
- 1 year warranty on all repairs



C&L Aerospace

+1 207 217 6050  
bizjets@cla.aero

# HAWKER COMPONENT REPAIR SPECIALITIES



## Gear Doors

The Hawker gear doors and fairings can be quite complex to repair, but fear not, C&L has a solution for you.

Common issues:

- Inner pan pressing cracks (most common)
- Skin damage (corrosion, dents, cracks, punctures)
- Cracked channels
- Welded reinforcement bends, cracks
- Bushing, various hardware corrosion



## How can we help?

- Full repair and overhaul\* capabilities
  - Structural repairs
  - Weld repairs
  - Stock exchange units to support quicker turns
  - 1 year warranty
  - Sheet metal repairs (skins)
  - Channel replacements
- \*Overhaul includes spares kit (hardware, attachment items)



C&L Aerospace

+1 207 217 6050  
bizjets@cla.aero



# HAWKER COMPONENT REPAIR SPECIALITIES



## Flight Controls

Our component repair group has seen a wide range of squawks when it comes to Hawker flight controls. Because of our experiences, we're able to approach each specific issue with a customized approach to get your aircraft back in the air quickly, with the most minimal hit to your budget. The Hawker is a hand-built aircraft for which C&L has customized solutions to meet your specific needs.

We can service the following:

- Ailerons
- Flaps
- Tabs
- Rudders
- Elevators

C&L also stocks exchange solutions for many of the products to meet your flight schedules.



C&L Aerospace

+1 207 217 6050  
bizjets@cla.aero

# ROTABLE EXCHANGE PARTS

Our vast Hawker inventory is well-stocked with ready-to-install components. Here are just some of the higher-moving parts we commonly support.

## DOORS

25FC6829AF .....	TENSATOR MOTOR
25FC7477-31A .....	UPPER DOOR STAY ASSY (FIXED)
25FC7477AB .....	UPPER DOOR STAY ASSY (FIXED)
800-8270-17 .....	UPPER DOOR STAY ASSY (BREAKOVER)
800-8270-33 .....	UPPER DOOR STAY ASSY (BREAKOVER)

## ELECTRICAL POWER

23080-005 .....	STARTER GENERATOR
23080-064 .....	STARTER GENERATOR
501-1228-04 .....	EMERGENCY POWER SUPPLY
51539-006H .....	GCU
BA02801-1 .....	FREQUENCY WILD A.C. GENERATOR
CB02701 .....	GENERATOR CONTROL UNIT
PC250 .....	STATIC INVERTER

## ENGINE EXHAUST & THRUST REVERSER

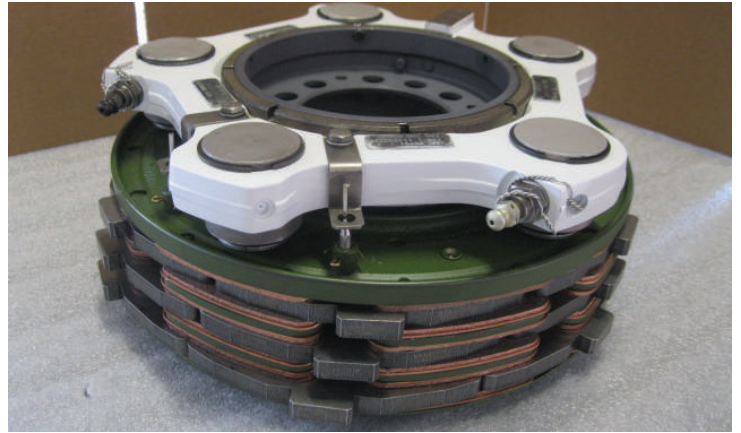
225-0012-509 .....	THRUST REVERSER ASSY - LH
225-0012-511 .....	THRUST REVERSER ASSY - RH
5453512-19 .....	ACTUATOR ASSY - TR
5453512-20 .....	ACTUATOR ASSY - TR

## FLIGHT CONTROLS

25-8CT29-115A .....	ELEVATOR TRIM JACK ASSY
25-8CT29-116A .....	ELEVATOR TRIM JACK ASSY
25-8CW159AB .....	SCREWJACK, LH FLAP
25-8CW159AC .....	SCREWJACK, LH FLAP
25-8CW161AB .....	SCREWJACK, RH FLAP
25-8CW161AC .....	SCREWJACK, RH FLAP
614MK-2 .....	UNIT ASSY, FLAP CONTROL
AIR46520-2 .....	AIRBRAKE JACKS
AIR46521-1 .....	AIR BRAKE SERVO ASSY
AIR46521-2 .....	AIRBRAKE SERVO

## HYDRAULIC POWER

42022-03 .....	PUMP, HYDRAULIC
AC67732 .....	BRAKE CONTROL VALVE
AIR45394-0 .....	RELIEF VALVE ASSY
AIR45474 .....	PRESSURE MAINTAINING VALVE
AIR45474/O .....	PRESSURE MAINT.VALVE
TP42000 .....	PRESSURE SWITCH EMERG. BRAKES SYSTEM
TP42001 .....	PRESSURE SWITCH EMERG. BRAKES LP WARNING



## LANDING GEAR

AC65216 .....	MAXARET
AC65218 .....	MAXARET
AHA1897 .....	BRAKE ASSY
AIR45396-5 .....	STEERING SERVO ASSY
AIR45396-7 .....	JACK, STEERING
AIR45404-1 .....	NOSE JACK ASSY
AIR45406/1 .....	SELECTOR/DUMP VALVE
AIR45408 .....	STEERING VALVE
AIR45408-0 .....	STEERING VALVE
AIR48484-3 .....	HYDRAULIC ACTUATOR- JACK DOOR
AIR48485-3 .....	HYDRAULIC ACTUATOR- JACK DOOR
AIR48502/6 .....	MAIN U/C JACK ASSY GEAR RETRACT
AIR48502-7 .....	JACK ASSY - MLG RETRACTION LH
AIR48503-7 .....	JACK ASSY - MLG RETRACTION RH
AIR48540-1 .....	SEQUENCE VALVE
AIR48542-1 .....	REVERSING VALVE ASSY
AIR48543/1 .....	REVERSING VALVE ASSY

## NAVIGATION & AUTOFLIGHT

7003110-901 .....	ELECTRONIC DISPLAY
WL1605AM2 .....	ALTIMETER
622-3260-001 .....	ELEVATOR TRIM SERVO MOTOR

## MISC

25-8WS2141-9A .....	AILERON BEARING PLATE
3060785-3 .....	OIL LUBE AND SCAV PUMP
3070850-57 .....	FUEL PUMP
3213788-1-1 .....	VALVE ASSY, MIXER
LDA150A-8C .....	CONTACTOR, BUSTIE
LDA200-B18C .....	CONTACTOR, INVERTER SUPPLY
NF0075-667 .....	ICE DETECTOR
WKA27942-2 .....	FILTER/BURSTING DISK ASSY, OXYGEN
WKA37447 .....	BOTTLE ASSY, O2



C&L Aerospace

+1 207 217 6050  
bizjets@cla.aero

# HAWKER SUPPORT PROGRAM

**C&L is an authorized distributor  
for many quality OEMs**

## Contract Pricing

C&L can offer a wide array of solutions to our customer base for any simple one-off requirement. However, we provide contract discounts on rotatable items as well. Here are just some of the rotatable items in which we can offer contract discounts:

- Gear actuation parts (AIR-prefix parts)
- TKS panels  
Wing (P/N 25-8WS1513-XX, D33XX)  
HSTAB (P/N 25-8KT1-XXX)
- Wing leading edges  
(P/N 25-8WS7-XXX, 25-9WS7-XXX)
- Outboard titanium leading edges  
(P/N S25-8WS5000XXX)
- Thrust reverser actuation (P/N 54535XX-XX)
- Champion Ignition Products
- Igniters, exciters, leaders

When the other guy only  
goes 1/2 way for you, C&L will  
support you full-circle with

**more options,  
better service,  
and a superior product.**

*Let us be your trusted partner.  
Contact us today.*



**C&L Aerospace**

## Proudly Offering

**HÉROUX DEVTEK** 

Landing Gear



**AEROSPACE**

Ignition Products

**GARMIN** 

ADS-B



Wi-Fi

**DYNAMO** 

Custom Engineered  
Products

 **HUTCHINSON**®

Engine Mounts

Blue Sky Network 

Satellite Technology  
Equipment

+1 207 217 6050  
[bizjets@cla.aero](mailto:bizjets@cla.aero)